

## International Ethernet Private Line

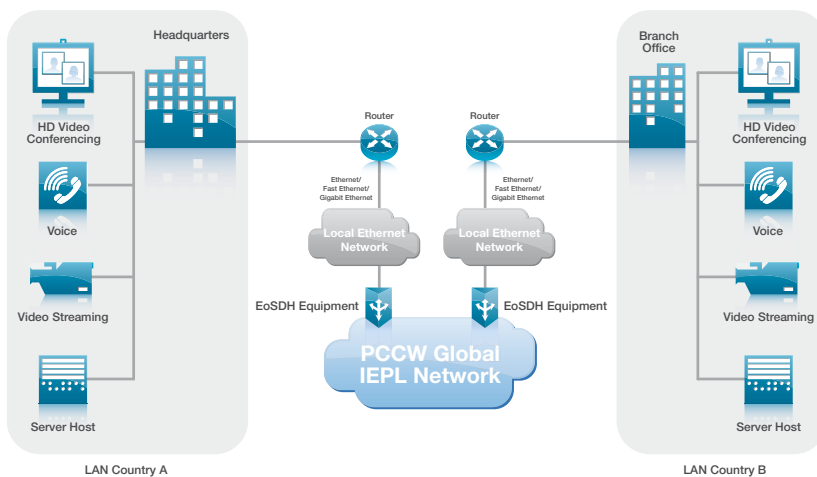
International Ethernet Private Line (IEPL) provides customers with dedicated international data connectivity and bandwidth with the same reliability, minimal transmission delay and network security as universally-trusted International Private Leased Circuits (IPLCs).

Made available via a standard Ethernet interface, this cost-effective solution enables you to buy what's needed and upgrade when you are required to achieve maximum cost savings to accommodate business growth with high-volume applications.

### Key benefits to your business

- Reliable and secure network for critical applications – IPLC-style Layer 1 SDH (Synchronized Digital Hierarchy) international transmission infrastructure supports time-sensitive and mission-critical applications
- Low latency for high throughput – the latest direct Ethernet over SDH (EoSDH) technologies and optical-fiber equipment minimize transmission delay and data overheads to improve bandwidth efficiency
- Easy management – total transparency to upper-layer protocols along with fully customer-managed IP-address assignment
- Cost effectiveness – lower CPE cost, flexible bandwidth subscription and “Bandwidth On Request” for ad-hoc applications

### Network diagram



Enterprise Solutions

## Features and value-added services

- Enhanced IMBS (IPLC) with standard Ethernet access interface
- Guarantee end-to-end dedicated international bandwidth
- Shortest transmission delay and highest network security
- Scalable bandwidth subscription and upgrade path
- Supports of multiple real-time mission-critical applications
- “Bandwidth On Request” for ad-hoc applications

## Specifications

- Interface: Ethernet, Fast Ethernet and Gigabit Ethernet
- Data rates supported: 4Mbps to 1,000Mbps

## Why PCCW Global

### Resilient global infrastructure & robust network

- IEPL covers more than 15 cities and 10 countries
- One of the largest IP backbone with Asia Pacific's highest resilience and redundancy

### Service excellence

- Global Services team to manage implementation of regional and global projects
- World-class provisioning and operating processes
- Toll-free services with multilingual support

### Innovative solutions based on leading-edge technology

- Integrated global communications solutions with on-demand bandwidth flexibility over IEPL
- IP-based value-added services

## Contact us

**Americas**  
**Herndon, VA, USA**  
Tel +1 703 621 1600  
americas@pccwglobal.com

**Asia Pacific**  
**Hong Kong**  
Tel +852 2888 6688  
asiapacific@pccwglobal.com

**Europe**  
**London, UK**  
Tel +44 (0) 207 297 6123  
europe@pccwglobal.com

**Middle East & Africa**  
**Dubai, UAE**  
Tel +971 (0) 4 204 5834  
mena@pccwglobal.com  
africa@pccwglobal.com

[www.pccwglobal.com](http://www.pccwglobal.com)

Employing approximately 18,200 staff worldwide, PCCW Limited is the holding company of HKT Group Holdings Limited (HKT) and serves customers as Hong Kong's premier telecommunications provider and a world-class player in Information & Communications Technologies. Operating as a wholly-owned subsidiary of HKT, PCCW Global provides integrated global communications solutions, runs a fully-meshed IP, fiber and satellite network and serves the voice, data and multimedia needs of enterprises worldwide, plus the operational requirements of service providers.